

STANDARD DEPARTURE CHART
INSTRUMENT (SID) - ICAO

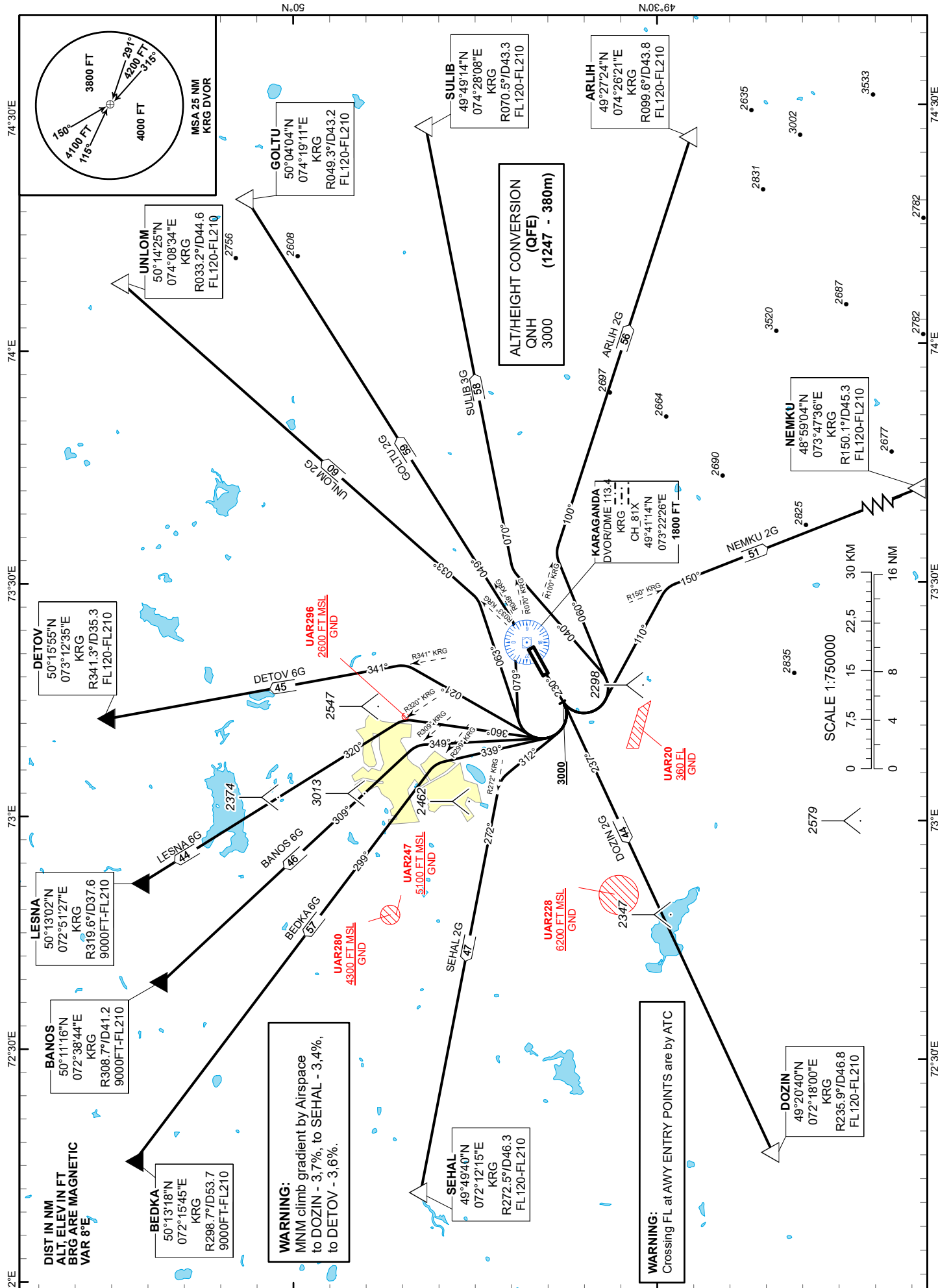
TRANSITION ALTITUDE
10000 FT

KARAGANDA TOWER 122.0
KARAGANDA ATIS (EN) 135.8
KARAGANDA ATIS (RU) 127.8

ARLIH 2G, BANOS 6G, BEDKA 6G,
DETOV 6G, DOZIN 2G, GOLTU 2G,
LESNA 6G, NEMKU 2G, SEHAL 2G,
SULIB 3G, UNLOM 2G.

KARAGANDA
RWY 23

CHANGE: GEDNO 6G excluded.



STANDARD DEPARTURE ROUTES – INSTRUMENT (SID) KARAGANDA RWY 23
UNLOM 2G After take-off climb straight ahead to 3000 or above, then turn RIGHT on track 063° until intercept R033°KRG, then proceed on track 033° to UNLOM (R033.2° D44.6NM KRG). Cross UNLOM at FL120-FL210.
GOLTU 2G After take-off climb straight ahead to 3000 or above, then turn RIGHT on track 079° until intercept R049°KRG, then proceed on track 049° to GOLTU (R049.3° D43.2NM KRG). Cross GOLTU at FL120-FL210.
SULIB 3G After take-off climb straight ahead to 3000 or above, then turn LEFT on track 040° until intercept R070°KRG, then proceed on track 070° to SULIB (R070.5° D43.3NM KRG). Cross SULIB at FL120-FL210.
ARLIH 2G After take-off climb straight ahead to 3000 or above, then turn LEFT on track 060° until intercept R100°KRG, then proceed on track 100° to ARLIH (R099.6° D43.8NM KRG). Cross ARLIH at FL120-FL210.
NEMKU 2G After take-off climb straight ahead to 3000 or above, then turn LEFT on track 110° until intercept R150°KRG, then proceed on track 150° to NEMKU (R150.1° D45.3NM KRG). Cross NEMKU at FL120-FL210.
DOZIN 2G After take-off climb straight ahead to 3000 or above, then turn RIGHT on track 237°, then proceed to DOZIN (R235.9° D46.8NM KRG). Cross DOZIN at FL120-FL210.
SEHAL 2G After take-off climb straight ahead to 3000 or above, then turn RIGHT on track 312° until intercept R272°KRG, then proceed on track 272° to SEHAL (R272.5° D46.3NM KRG). Cross SEHAL at FL120-FL210.
BEDKA 6G After take-off climb straight ahead to 3000 or above, then turn RIGHT on track 339° until intercept R299°KRG, then proceed on track 299° to BEDKA (R298.7° D53.7 KRG). Cross BEDKA at 9000FT-FL210.
BANOS 6G After take-off climb straight ahead to 3000 or above, then turn RIGHT on track 349° until intercept R309°KRG, then proceed on track 309° to BANOS (R308.7° D41.2NM KRG). Cross BANOS at 9000FT-FL210 or above.
LESNA 6G After take-off climb straight ahead to 3000 or above, then turn RIGHT on track 360° until intercept R320°KRG, then proceed on track 320° to LESNA (R319.6° D37.6NM KRG). Cross LESNA at 9000FT-FL210 or above.
DETOV 6G After take-off climb straight ahead to 3000 or above, then turn RIGHT on track 021° until intercept R341°KRG, then proceed on track 341° to DETOV (R341.3° D35.3NM KRG). Cross DETOV at FL120-FL210.